

## Customer Template Generation

<b>CUSTOMER TEMPLATE GENERATION .....</b>	<b>1</b>
<b>PURPOSE.....</b>	<b>2</b>
"USER DEFINED TEMPLATE" GENERATION .....	2
USING THE PREVIOUSLY DEFINED "USER DEFINED TEMPLATE" .....	5



## Purpose

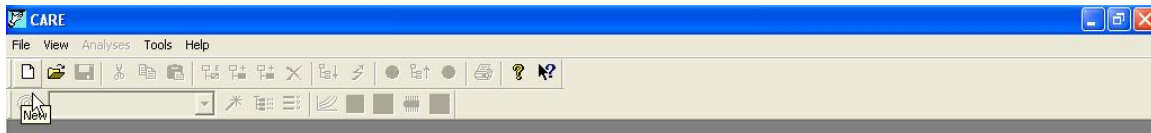
In order to allow a user to use his own definitions for all of his projects, a “Customer Template Generator” is now available.

The “Customer Template Generator” allows a user to select all the global and environmental settings for all of his projects only once, and then using it throughout all of his projects.

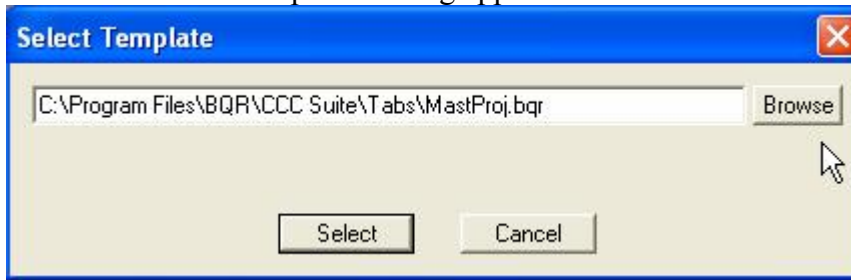
### ***“User defined Template” generation***

In order to create a user definitions template, the one-time few following steps should be taken.

1. Create a new file.



2. A “Select Template” dialog appears

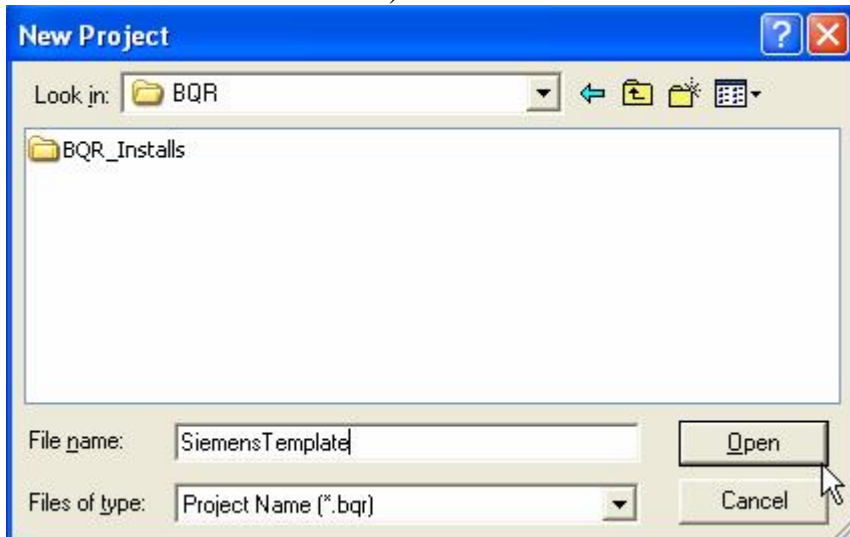


Press “Select”.

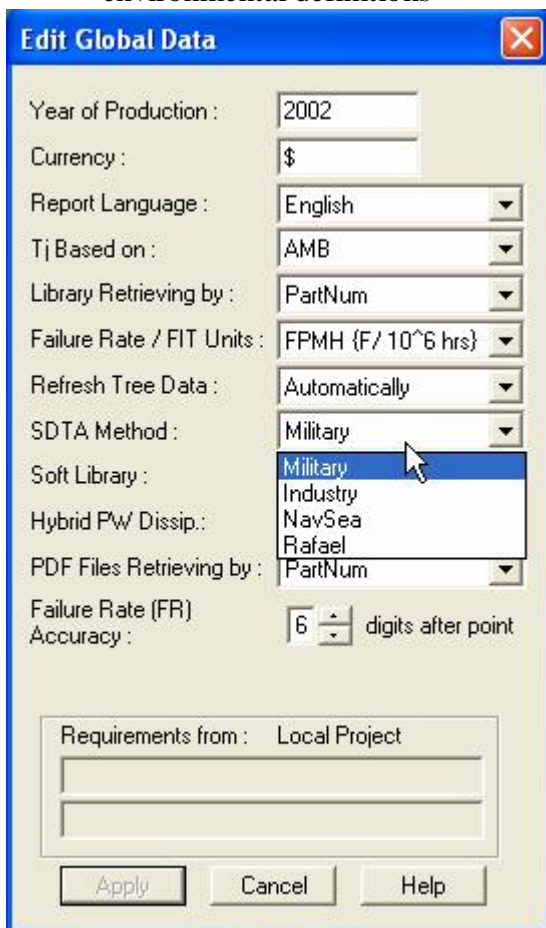


**Reliability Engineering Ltd.**

3. Create new project which will be used as a template (Selection of a significant name is recommended)



4. In the main window of the new project just opened, define your global data and environmental definitions





Condition List

Current Project: C:\DOCUMENTS AND SETTINGS\ROMAN.BQR\MY DOCUMENTS\test.bqr  
Requirements from: Local Project

Condition Name	Mark		Temp [°C]	Env	Quality Level	Prediction Method	MTBF		Power Dissip	Operation Type	Operation Time	Reliability
	F	S					Required	Predicted				
MTBF_25_GB	+	-	25	GB	LIBRARY	B332I6	100000	---	---	OPER	0	---
SDTA_55	-	+	55	GB	LIBRARY	B332I6	100000	---	---	OPER	0	---

Buttons: Mark Frp, Mark Sdta, Add, Edit, Delete, Graph, Select, Return, Help

Condition List

Current Project: C:\BQR  
Requirements from: Local Project

Condition Name	Mark		Temp [°C]	Env	Quality Level	Prediction Method	MTBF		Power Dissip	Operation Type	Operation Time	Reliability
	F	S					Required	Predicted				
MTBF_25_GB	+	-	25	GB	LIBRARY	B332I6	100000	---	---	OPER	0	---
SDTA_55	-	+	55	GB	LIBRARY	B332I6	100000	---	---	OPER	0	---

Buttons: Mark Frp, Mark Sdta, Add, Edit, Delete, Graph, Select, Return, Help

**Edit Condition**

Condition Name: MTBF\_25\_GB  
Temperature [°C]: 25  
Operation Type: OPER  
Operation Time [Hrs]: 0  
 Mark Frp  
 Mark Sdta

FRP Data

Prediction Method: B332I6 - Bellcore TR-NWT-332Issue6(12/97)  
Environment: B332I6 - Bellcore TR-NWT-332Issue6(12/97)  
Quality Level Grade: CUSTOM - User Customized Model  
MTBF Required [Hrs]: 29500

Options: 5299B - Handbook GJB299B Parts-Stress, MECHAN - The Mechanical(NSWC-98/LE1) standa, SIEMEN - Siemens Prediction SN29500 with RTC d, 29500 - Siemens Prediction SN29500, IEC-60 - European IEC-60, ITAL-T - Italy-Telecom

Buttons: OK, Cancel

Condition List

Current Project: C:\BQR\test1.bqr  
Requirements from: Local Project

Condition Name	Mark		Temp [°C]	Env	Quality Level	Prediction Method	MTBF		Power Dissip	Operation Type	Operation Time	Reliability
	F	S					Required	Predicted				
MTBF_25_GB	+	-	25	GB	LIBRARY	29500	100000	---	---	OPER	0	---

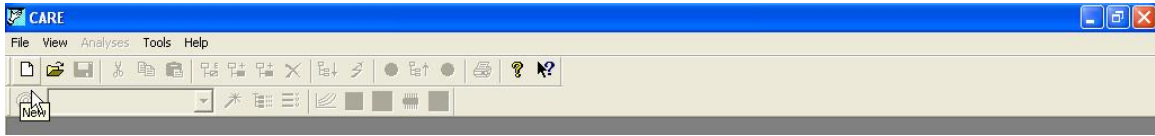
Buttons: Mark Frp, Mark Sdta, Add, Edit, Delete, Graph, Select, Return, Help

- 5. Save the project
- 6. Close the project file

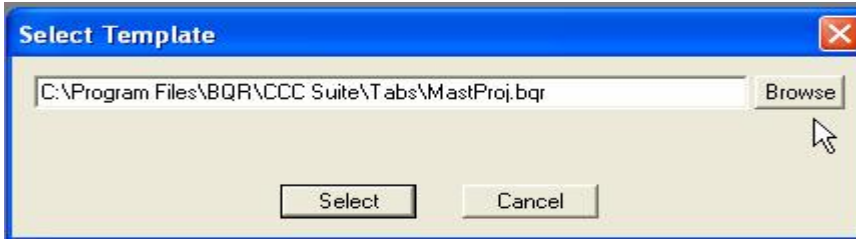
**You have completed the “User defined template” process!**

## Using the previously defined “User Defined Template”

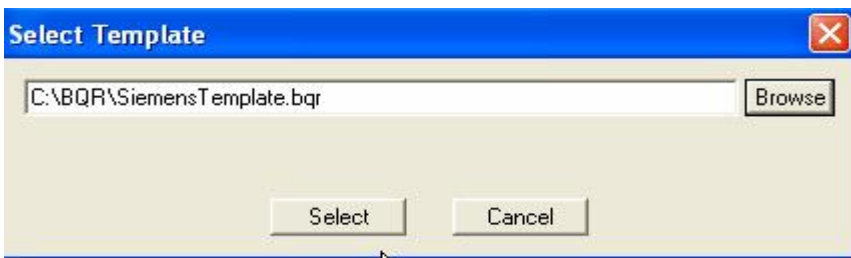
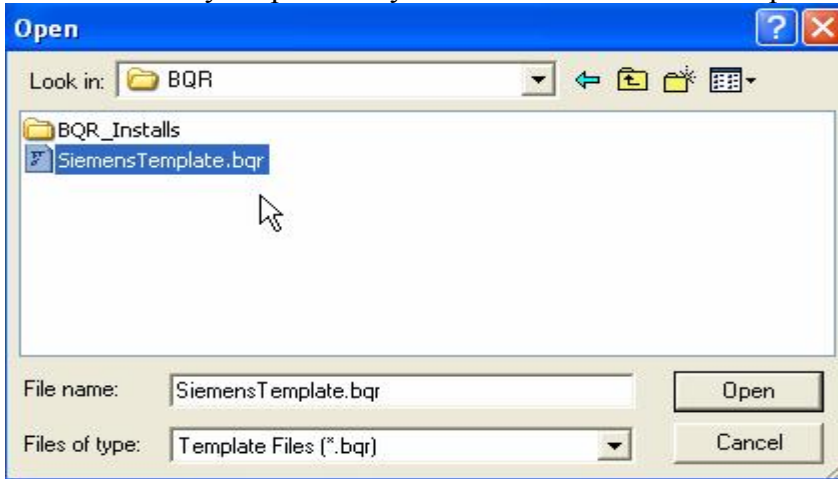
1. Create a new file



2. Press “Browse”



3. Browse for your previously defined “User Defined Template”:



4. Create new project file and start working

**Enjoy!**

*BQR Support Team  
2005*